



**Metaltec
Steel
Abrasive Co.®**

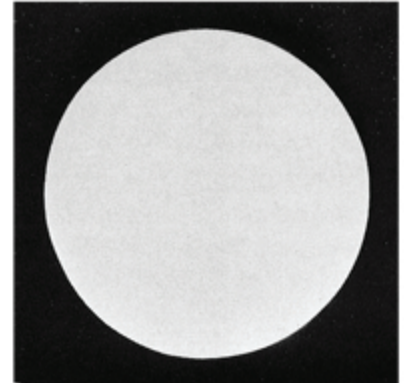
BAINITE SHOT OFFERS LONGER LIFE

METALTEC SHOT LASTS 10-40% LONGER THAN MARTENSITIC CAST STEEL SHOT, HERE'S WHY.

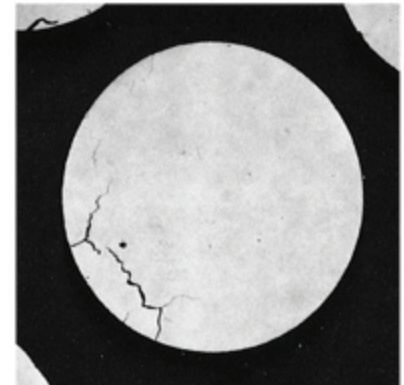
Quite simply, Bainite cast steel shot has the ideal microstructure for blast cleaning and peening.

The SAE specification for standard hardness cast steel shot is 40 – 51 on the Rockwell "C" scale. It is best when shot meets this specification as-cast, since additional heat treating can create microcracks which are detrimental to shot performance. Martensitic cast steel shot is 57-62 Rc as-cast and must be drawn down to the proper SAE specification through heat treating processes. Metaltec's Bainitic cast steel shot is typically 44 - 46 Rc as-cast, requiring no further heat treatment - eliminating the possibility of microcracks.

Bainite wears down gradually while maintaining its shape and does not break apart into angular pieces. The blend of upper and lower case Bainite in the Metaltec product forms a crack-resistant interwoven lattice type microstructure. This makes the particles resistant to crack propagation throughout the life of each particle.



Metaltec Bainite



Tempered Martensitic



BAINITE MICROSTRUCTURE

- LONGER LIFE
- GREATER DURABILITY
- NO MICROCRACKS
- SUPERIOR MICROSTRUCTURE
- BEST VALUE

41155 Joy Road, Canton MI 48187
Phone: 734-459-7900 Fax: 734-459-7907

metaltecsteel.com